

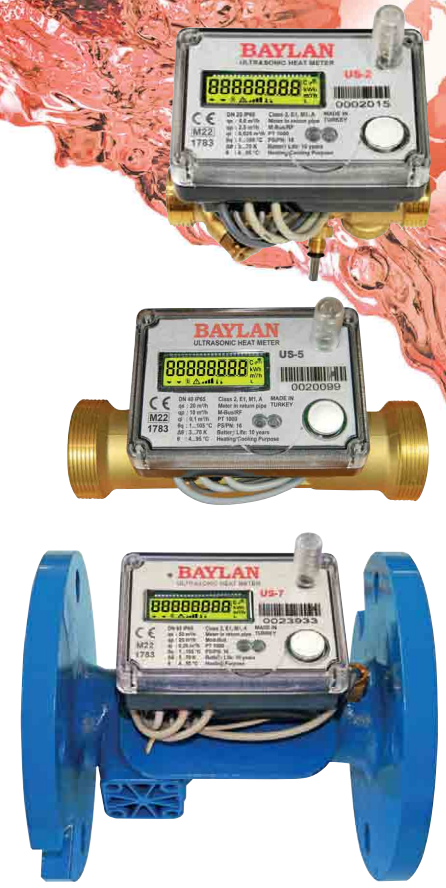
BAYLAN

WATER METERS

Ultrasonic Heat Meters



Model	DN (mm)	Dimensions (mm)			
		Length	Width	Height	Connection
US1	15	110	110	126	G3/4"
US2	20	130	110	135	G1"
US3	25	160	110	144	G1"1/4
US4	32	180	110	150	G1"1/2
US5	40	200	110	180	G2"
US6	50	200	165	187	Flange
US7	65	200	185	203	Flange
US8	80	225	200	215	Flange
US9	100	250	220	229	Flange
US10	125	250	250	256	Flange
US11	150	300	285	280	Flange
US12	200	350	340	330	Flange



Model	US1	US2	US3	US4	US5	US6	US7	US8	US9	US10	US11	US12
Nominal Diameter	DN15	DN20	DN25	DN32	DN40	DN50	DN65	DN80	DN100	DN125	DN150	DN200
Minimum Flowrate q_i (m ³ /h)	0.03	0.05	0.07	0.12	0.2	0.15	0.25	0.40	0.60	1.00	1.50	2.50
Perminent Flow q_p (m ³ /h)	1.5	2.5	3.5	6.0	10	15	25	40	60	100	150	250
Maximum Flow q_s (m ³ /h)	3.0	5.0	7.0	12.0	20	30	50	80	120	200	300	500
Temperature θ_q	1...105 °C (Pt1000)											
Measurement $\Delta\theta$	3...70 K (Pt1000)											
Range of Operation θ	4...95 °C (Pt1000)											
Measurement Class	Class 2 (EN 1434)											
Operating Preassure	1.6 MPa											
Preassure Loss at Nominal Flow	25 kPa											
Temperature Sensor Type	Pt1000											
Sensor Cable Length	1.5m											
Battery	3.6V lithium battery											
Comm. Interface	M-Bus / wM-Bus / Pulse output (Optional) / Optical port											
Display	Power: kW, Cumulative Heat Counter: kWh or MJ, Counter Range: 0-99999999 Transitional Flow: m ³ /h, Cumulative Flow: m ³ , Input Temperature & Output Temperature: °C Temperature Difference: °C, Cumulative Heat Input Period: s, Date: D/M/Y, Time: h/m/s											
Display Resolution	Heat Amount: 0.1 kWh-1 kWh, Cumulative Flow: 0.001 m ³ -1 m ³ , Temperature: 0.01°C, Temperature Difference: 0.01 °C											
Operating Temperature	-30 °C + 55 °C											
Weight (kg)	0,7	0,82	0,85	1,3	1,7	10,1	11,2	12,8	15,2	20,1	27,1	37,1
Installation	Output water pipe (made out of water temperature sensor assembly is ready)											
Mechanical Class	IP65											
Mechanical Class	M1											
Electromagnetic Class	E1											
Environmental Class	A											

"Due to continuous development of our products, we reserve the right to modify our product design or construction without prior notice."